



Premier Rainwater

Gutter Jointing Kit Installation



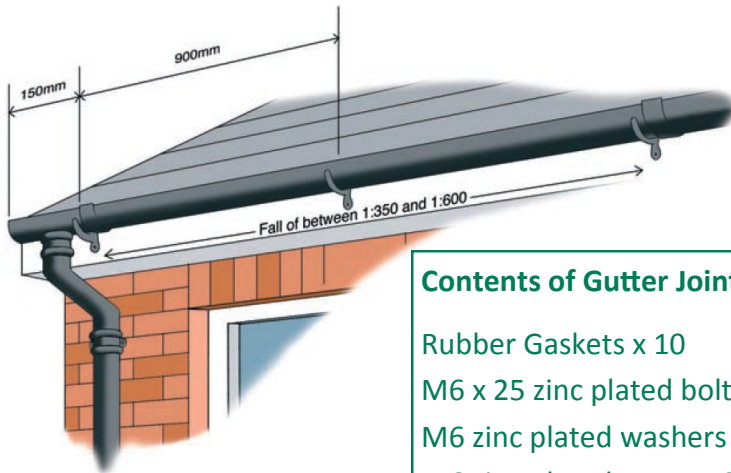
Gutter Jointing Kits are suitable for Premier Plain Half Round and Beaded Half Round gutters and fittings in 100mm, 115mm, 125mm and 150mm sizes.

Prior to jointing the gutter the proper measures for fixing should be in place. Gutters should be joined in situ, laid on correctly fitted brackets to avoid unnecessary strain or movement once the jointing process is complete.

FIXING GUIDELINES

- 1) Determine the direction for fitting the gutters beginning with the socketed end of the gutter.
- 2) Position the first bracket 150mm from the end of the run.
- 3) Fix subsequent brackets at 900mm maximum centres using a string line for alignment of brackets and ensuring a slight fall towards the outlet positions.
- 4) The gutters can be positioned on the brackets ready for jointing.

Note: It is essential that the gutter/ fitting joint should not be used to support any unsupported lengths of gutter.



Contents of Gutter Jointing Kit (HR006):

- Rubber Gaskets x 10
- M6 x 25 zinc plated bolts x 10
- M6 zinc plated washers x 10
- M6 zinc plated nuts x 10

Hargreaves Drainage Water Lane South Parade Halifax West Yorkshire HX3 9HG
Phone: 01422 330607 Fax: 01422 320349 E-mail: info@hargreavesfoundry.co.uk

www.hargreavesdrainage.com

Registered in England No. 3428346
HFDS001-HW-2-23/08/13



JOINTING GUIDELINES

- 1) Place the bolt through spigot of gutter/ fitting and then carefully, through the central hole in the gasket until flush with the spigot.



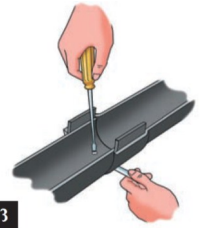
1

- 2) Locate bolt, gasket and spigot of gutter/ fitting into socket of gutter/ fitting and attach washer and square nut to the end of the bolt.



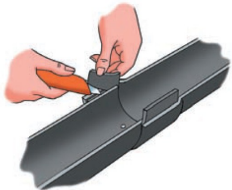
2

- 3) Ensure the gasket is seated correctly in the socket and tighten the nut until there is approximately 50% compression of the gasket. Do not over tighten.



3

- 4) Carefully cut off any excess rubber with a sharp knife.



4

- 5) After assembly paint exposed surfaces of nut, bolt and washer and any cut iron ends or exposed iron.



NOTE: All gutters and fittings supplied in a grey primer finish should be painted with a suitable undercoat and gloss finish prior to installation.

“Cast iron guarantee”